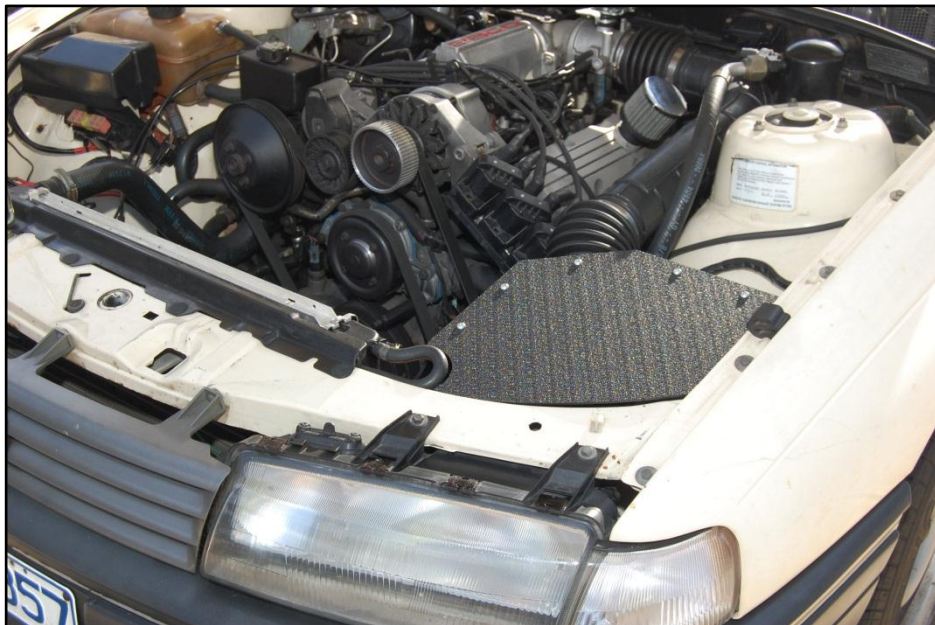




COLD AIR INTAKE
KIT TO SUIT HOLDEN VN-VS V6 & L67

Fitting Instructions



PART 1 - REMOVAL OF STANDARD AIRBOX



Step 1 - Loosen the hose clamp in the position shown



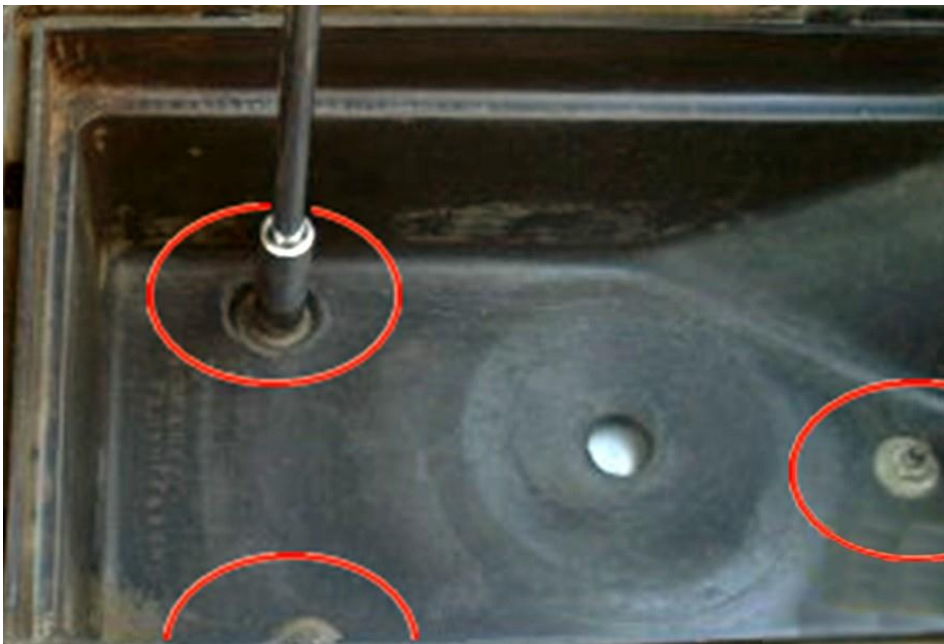
Step 2 - The lid of the airbox has 5 clips that hold it to the base of the airbox. Flick down these clips and remove the lid of the airbox.



Step 3 - Lift out the air filter element by hand.



Step 4 - There are 3 nuts that secure the base of the airbox to the car body. Loosen & remove these nuts, then remove the base of the airbox.

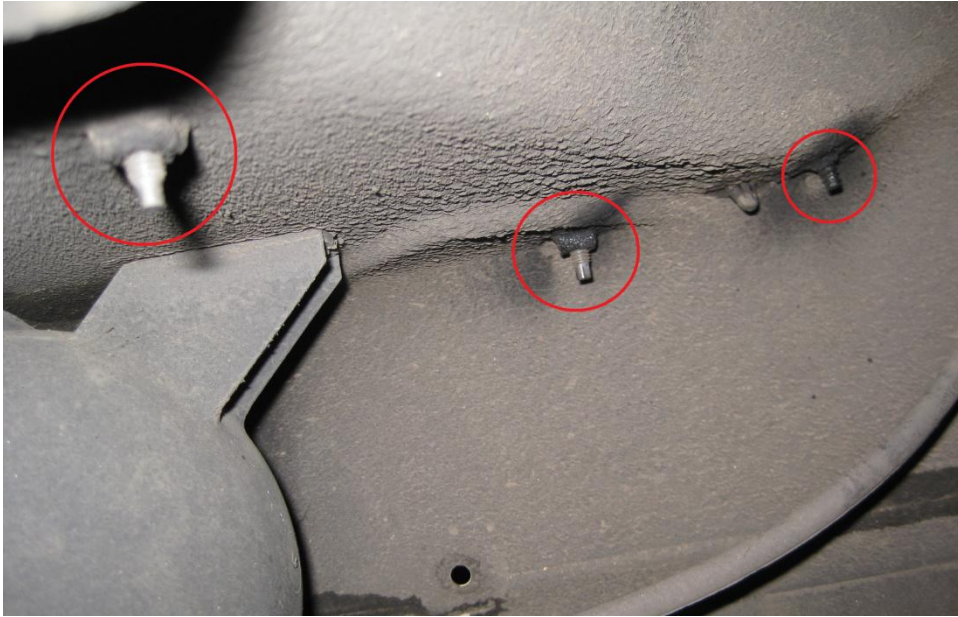




Step 5 - After removing the base of the airbox, 3 rubber bushes with protruding studs will remain. DO NOT attempt to remove these until they are cleaned properly from underneath the guard as this may damage the stud.



Firstly locate the studs beneath the guard as shown in the image below.



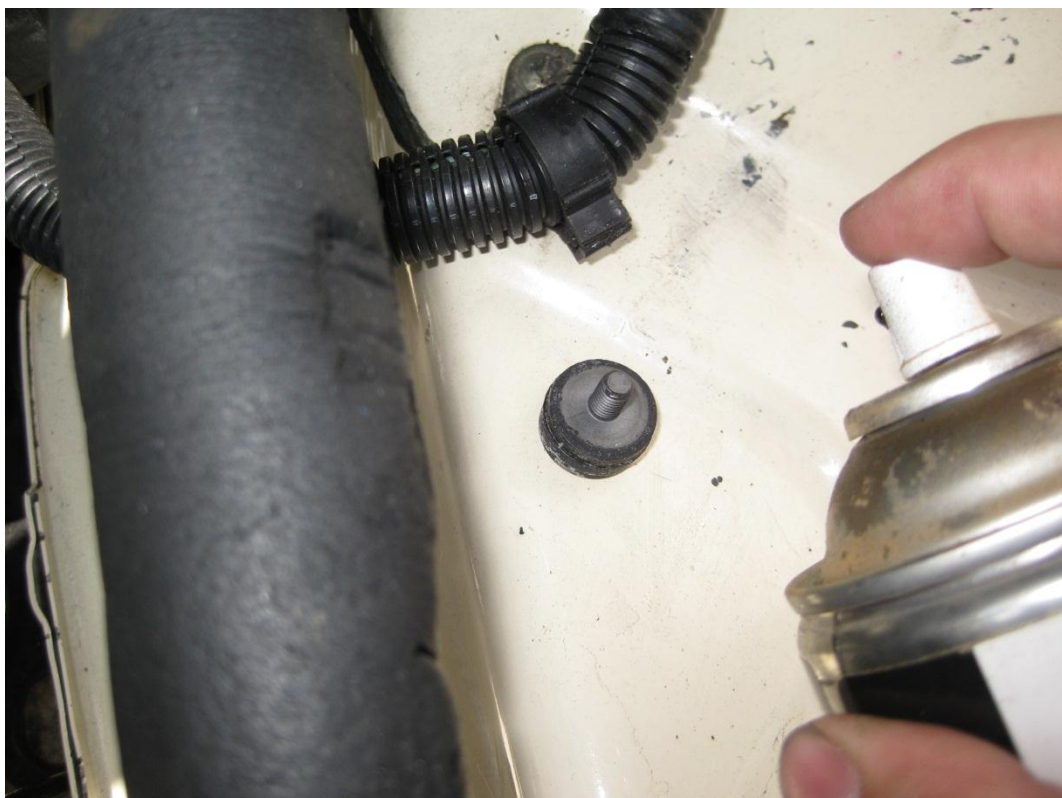
Spray the bottom of the studs with degreaser or any other industrial type cleaning agent to soften up any dirt and road grime.



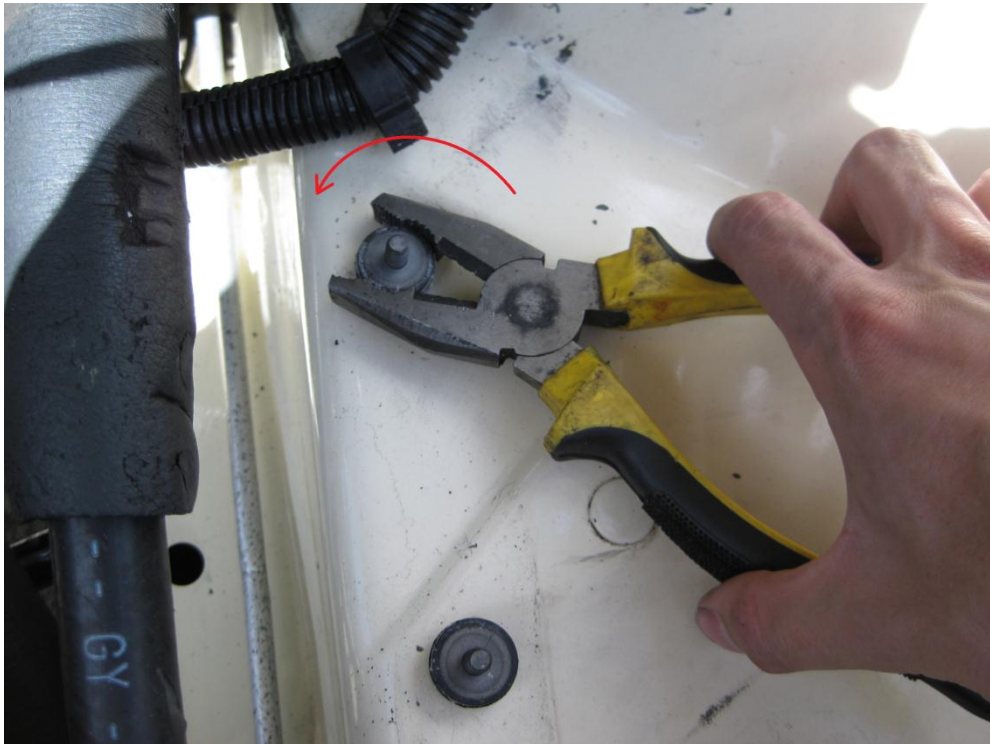
Using a steel wire brush, clean the bottom of the studs such that the threads are relatively clean.
Then spray the studs again using chain lube or any other industrial type lubricant.



Also spray the top of the studs with the chain lube to dislodge the mating surfaces which may have bonded together due to corrosion.



Using pliers (or vice-grips if required) grip the rubber bush, DO NOT grip the actual stud as the stud assembly is made of up two pieces which may shear. Turn the studs anti-clockwise to remove them.



PART 2– INSTALL NEW COLD AIR INTAKE ENCLOSURE.

Step 1 - One of the locations of the 3 studs removed in step 5 of part 1 is on a section of body that is depressed by a few mm relative to the other 2 mounts. Place washers at this location so that the surface of the top washer is flush with the rest of the body surface.



Step 2 - Drop the new performance enclosure into position as shown. Make sure the 3 mounting holes are aligned. 2 of them are in the plastic base of the enclosure, the other is in the bracket.



Step 3 - Place the flat washer, then spring washer onto the base of the enclosure over each hole, then insert the cap screws provided with the kit through the base of the enclosure and tighten with allen key. Do not fully tighten yet as some adjustment may be required at the end for a good fit.



Repeat for second hole.



Step 4 - The support bracket for the enclosure was inserted in the following way. Place the 2 screws through the wall of the enclosure.



Place a flat washer, spring washer then the nut in that order. Tighten the nut while holding the head of the screws using a flathead screwdriver.



Place the flat washer, then spring washer onto the base of the enclosure over each hole, then insert the cap screws provided with the support bracket through the base of the enclosure and tighten with allen key.





Step 5 - The plastic inlet pipe is supported by a bracket that is bolted into the side of the engine bay. The pipe must be lowered for proper fitment of the new enclosure. Bend this bracket down to allow the pipe to drop by about 20mm at the end that will meet the airbox.



Bend down by pushing on the pipe from the top.



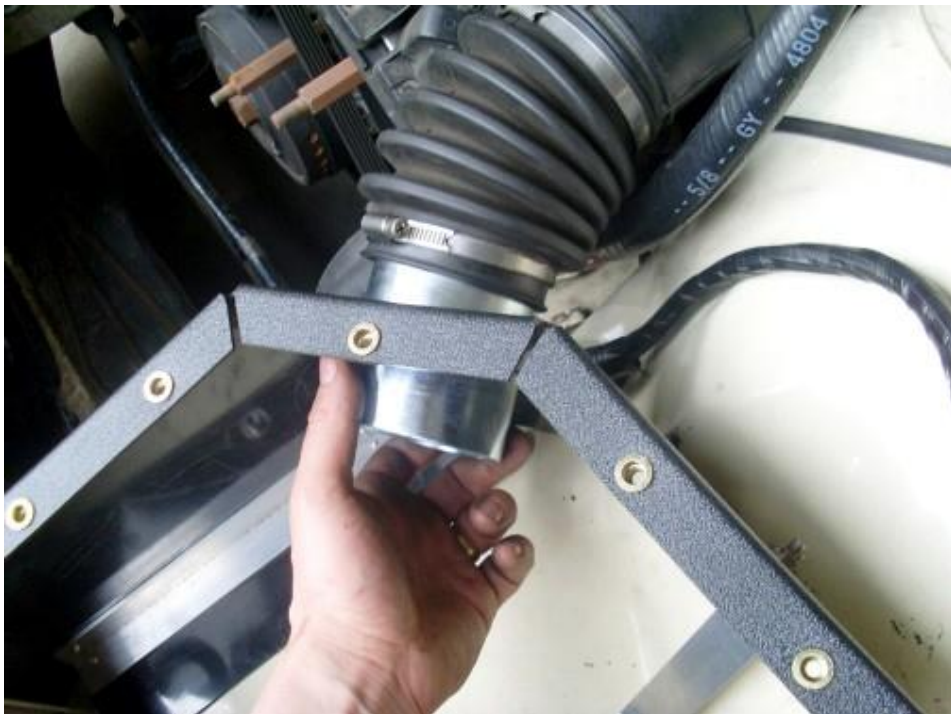
Step 6 - Loosen the hose clamp & remove the hose adapter from the lid of the old air box



Step 7 - Fit the convoluted hose to the end of the intake pipe. Tighten the hose clamp with a screwdriver.



Step 8- Insert the pod adapter pipe into convoluted hose and tighten hose clamp.



Step 9 - Slide pod filter over the adapter pipe and tighten with hose clamp.





Step 10 - Place the lid onto the enclosure



Insert the button head cap screws and tighten using allen key.



Cold air intake enclosure assembly is now complete. Check the edges around the lid fit nicely with the contours of the car panels. Note that the mounting positions in step 3 & step 4 of part 1 allow for considerable adjustment. If the airbox does not fit well relative to the car panels, loosen the mounts and the bracket & adjust the box until fit is precise.

