



**COLD AIR INTAKE
KIT TO SUIT HOLDEN VN-VS V8**

Fitting Instructions



PART 1: REMOVING STANDARD AIR BOX

The position of the airbox is shown below. Note that VR-VS models have the washer bottle in front; earlier models have no washer bottle here. These installation instructions apply to both. However, the lid for the box will be different.



Step 1 – Loosen the hose clamp of the inlet duct near the throttle body.



Step 2– Release the clips holding the lid of the standard air box.



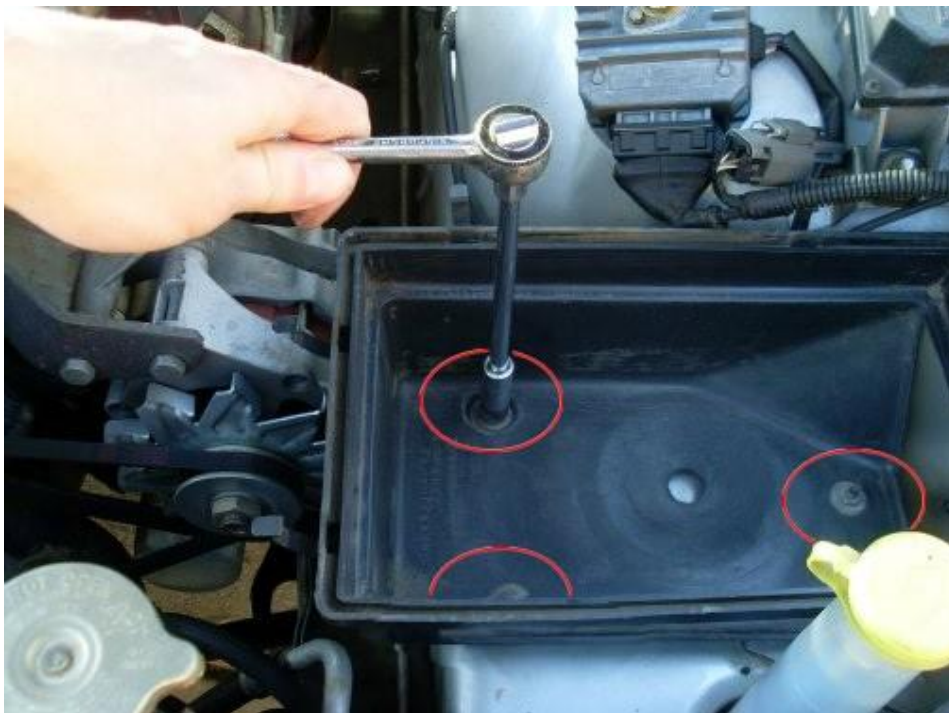
Step 3– When all the clips have been released, remove the lid of the air box.



Step 4 –Lift out the air filter element by hand.



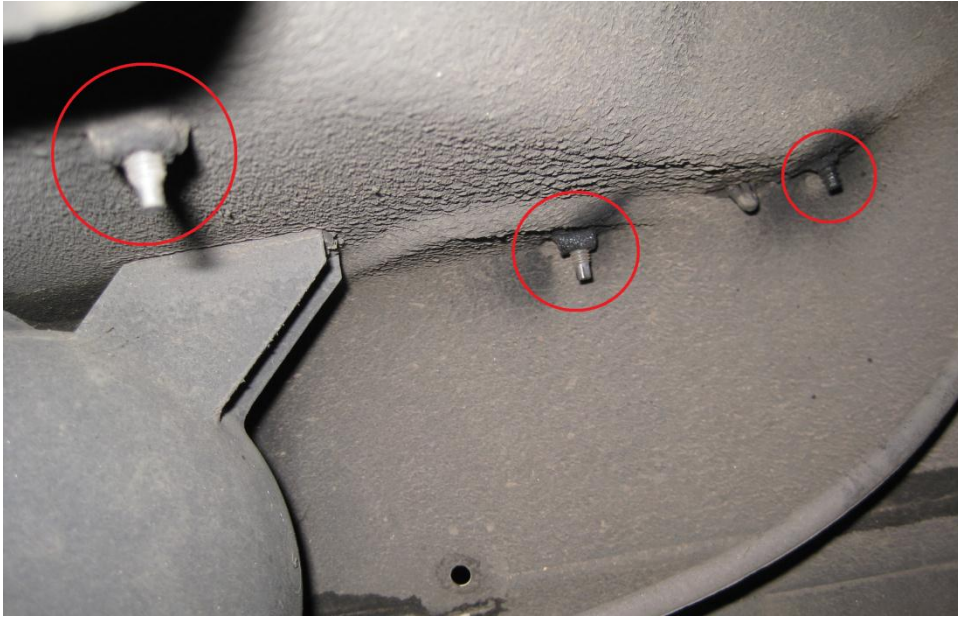
Step 5 –There are 3 nuts holding the base of the airbox to the car body. Loosen & remove them. The airbox can then be lifted out by hand.



Step 6 – After removing the base of the airbox, 3 rubber bushes with protruding studs will remain. DO NOT attempt to remove these until they are cleaned properly from underneath the guard as this may damage the stud.



Firstly locate the studs beneath the guard as shown in the image below.



Spray the bottom of the studs with degreaser or any other industrial type cleaning agent to soften up any dirt and road grime.



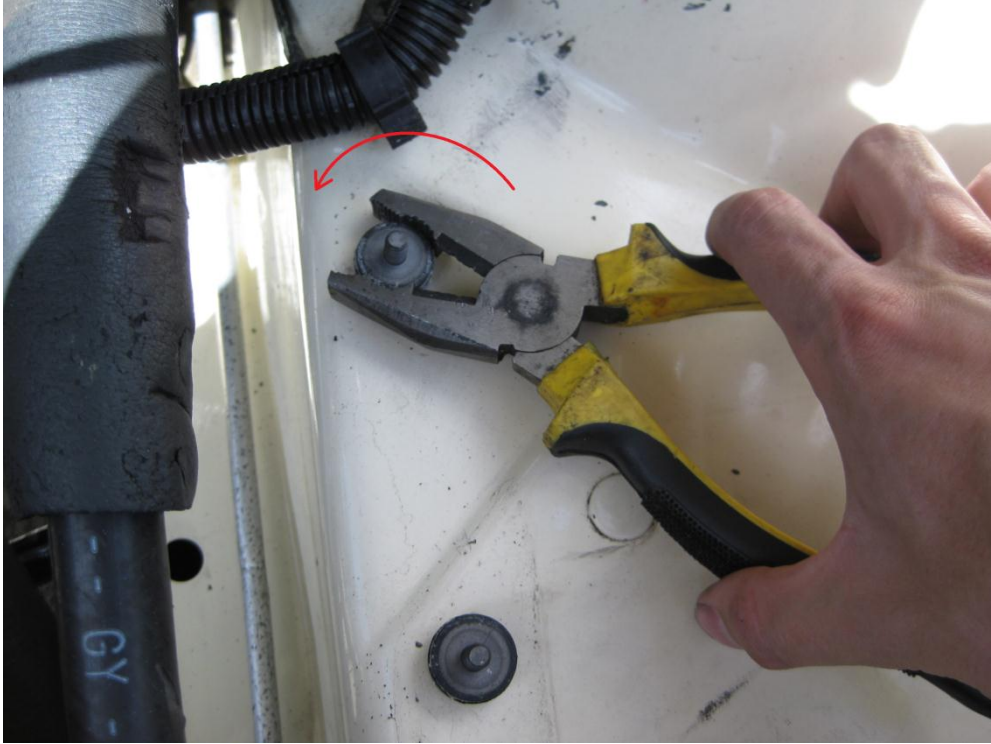
Using a steel wire brush, clean the bottom of the studs such that the threads are relatively clean. Then spray the studs again using chain lube or any other industrial type lubricant.



Also spray the top of the studs with the chain lube to dislodge the mating surfaces which may have bonded together due to corrosion.



Using pliers (or vice-grips if required) grip the rubber bush, DO NOT grip the actual stud as the stud assembly is made of up two pieces which may shear. Turn the studs anti-clockwise to remove them.

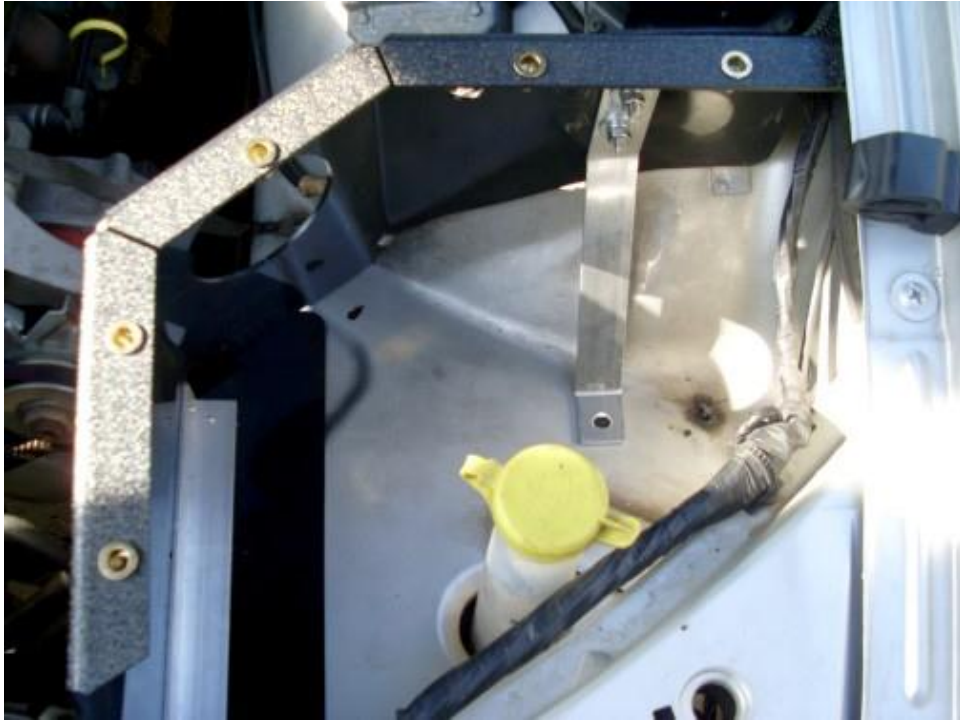


PART 2: INSTALLING NEW PERFORMANCE AIR ENCLOSURE

Step 1 –Notice that one of the holes is on a section of the car body that is depressed by a few mm. Place 3 washers (supplied in kit) on this hole so that the surface of the top washer is approximately flush with the other 2 holes.



Step 2 –Insert the new enclosure into the space as shown. Align the holes in the enclosure base with the holes of the mounts in the car body. Exercise care to not disturb the washers placed in the previous step.



Step 3 –Place a spring washer, then a flat washer onto the bolt (supplied in kit), insert into the holes of the enclosure base and into the car body. Fasten with an allen key.





Step 4 – The support bracket is to be inserted in the following manner. Place the 2 screws through the holes in the enclosure wall.

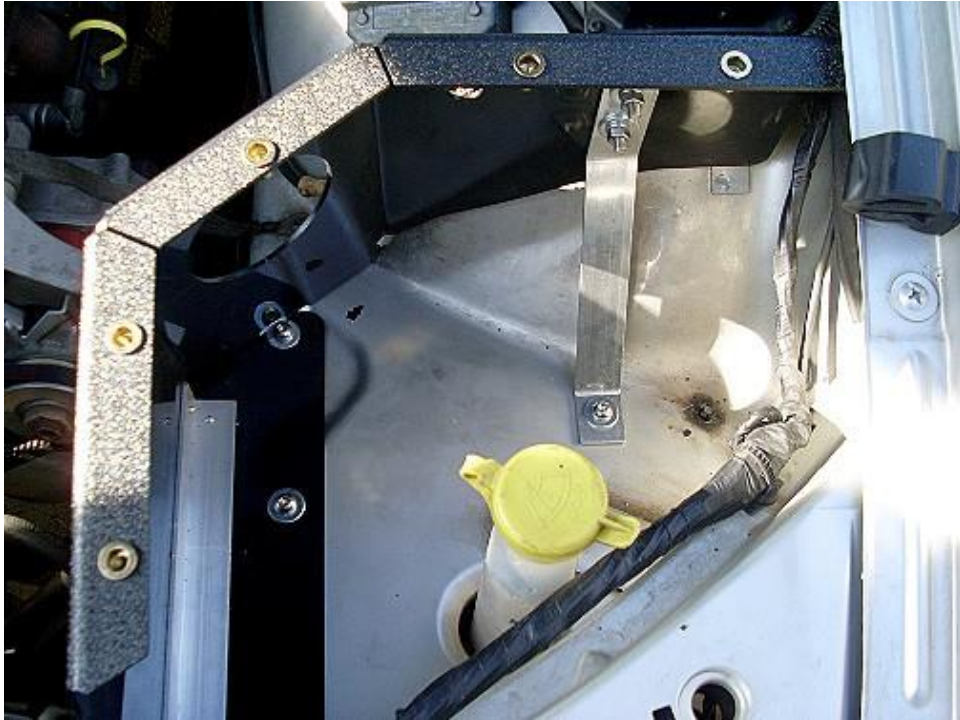


Feed the bracket through the screws, and tighten using flat washer, spring washer & nut.



Fasten into the base using an allen key. Make sure to include flat washer & spring washer.





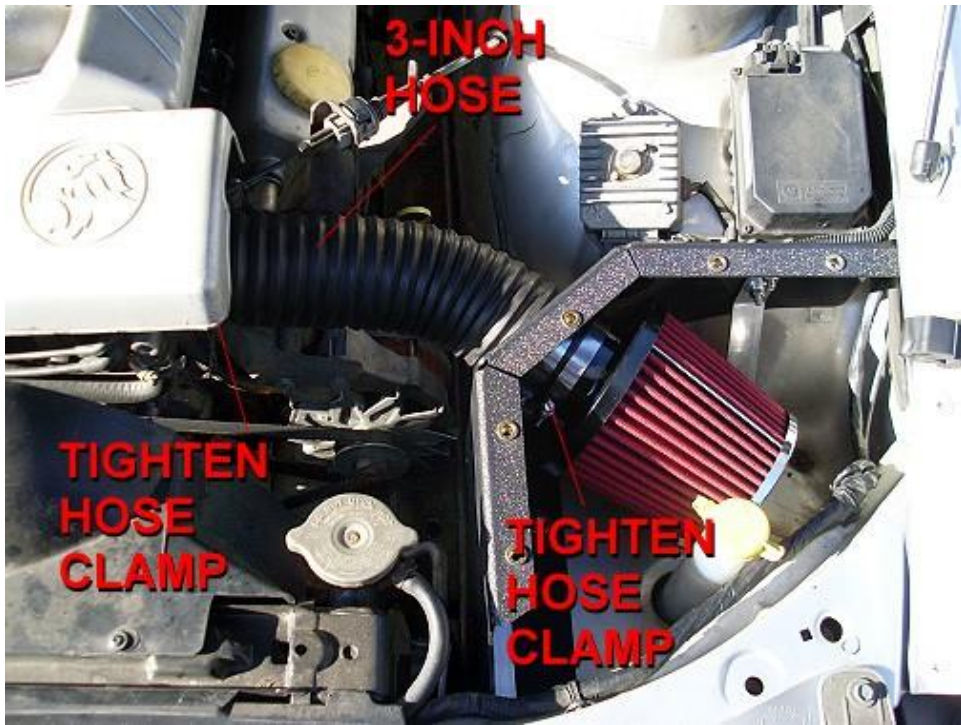
Step 5 – Snip the cable tie that restrains the wires behind the enclosure.



Step 6 – Slide the pod filter onto the pipe and insert into the enclosure through the circular hole.



Step 7 – Connect the section of 3-inch hose supplied with the kit to the throttle body at one end and to the pipe at the other end. Tighten hose clamps at both ends.



Step 8 – Fit the lid onto the enclosure and tighten the screws with an allen key. Installation is now complete. Check the edges around the lid fit nicely with the contours of the car panels. Note that the mounting positions in steps 3 & 4 of part 2 allow for considerable adjustment. If the enclosure does not fit well relative to the car panels, loosen the mounts and the bracket & adjust the box until fit is precise.

